

# 《高中英语》（上外版）

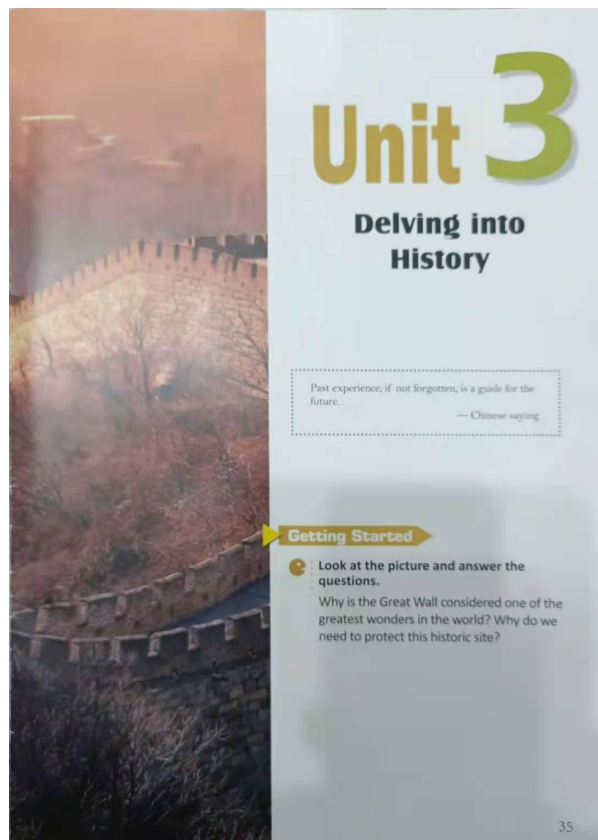
选择性必修第4册第3单元

## Delving into History

授课教师：浦东复旦附中分校 蒋丽君

# 《高中英语》（上外版）

## 选择性必修第4册第3单元



课时	授课内容
1	Getting Started/ Reading A
1	Reading A/ Vocabulary Focus
1	Reading A/ Grammar in Use
1.5	Listening, Viewing and Speaking
1	Reading B
0.5	Critical Thinking
1	Writing
1	Further Exploration/ Self-assessment

## 学习目标 **Learning Objectives:**

**By the end of the class, you will be able to ...**

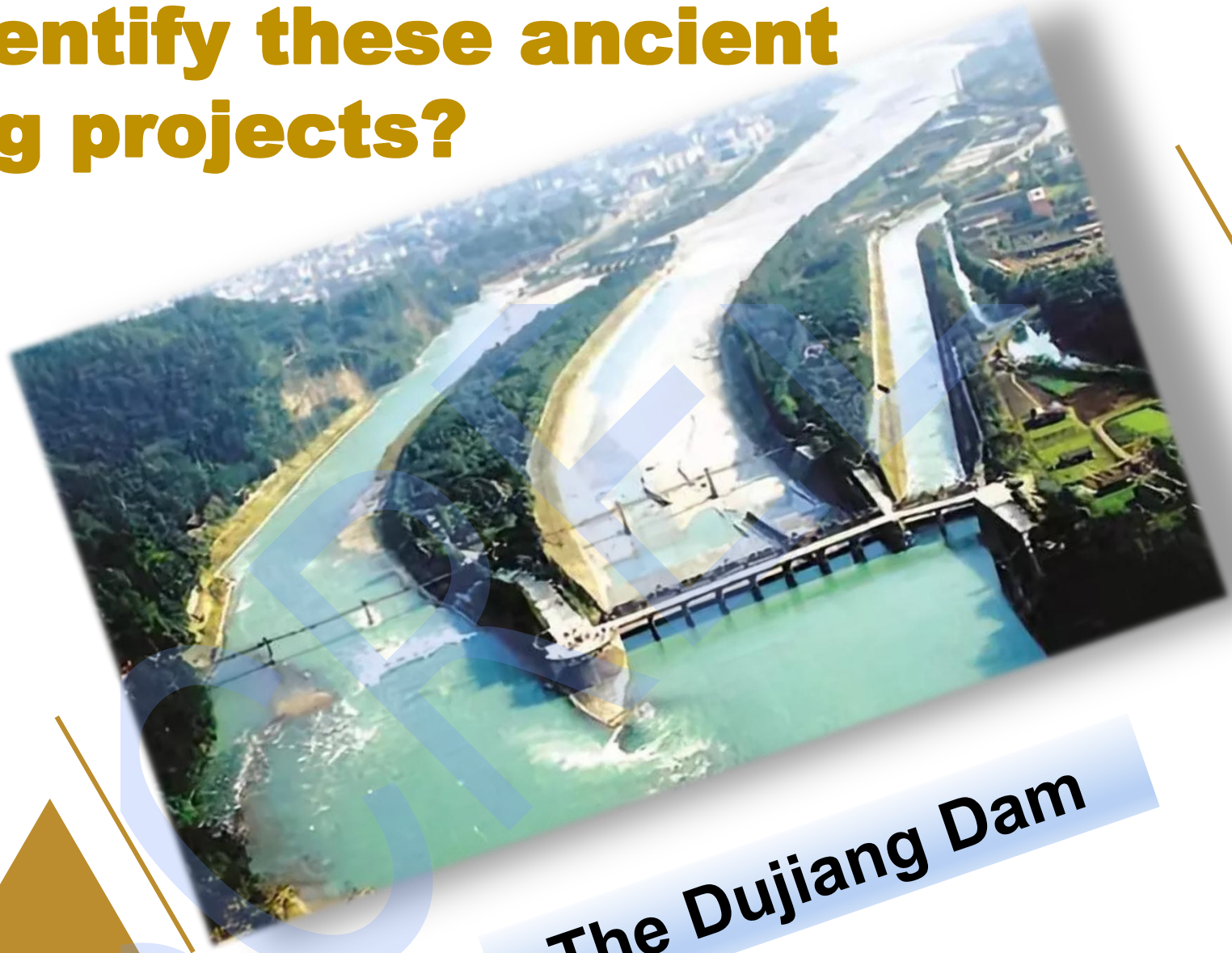
1. 能将有关大运河的历史事实按时间顺序排列;  
chronologically order the major events in the history of the Grand Canal;
2. 能找到文中不同历史时期有关大运河的详细信息;  
locate detailed information of the canal according to different historical periods;
3. 能分析大运河在历史上的作用变化以及它对我国的影响;  
analyze how the role of the canal changed over the history and how the canal impacted our country.

**Can you identify these ancient engineering projects?**



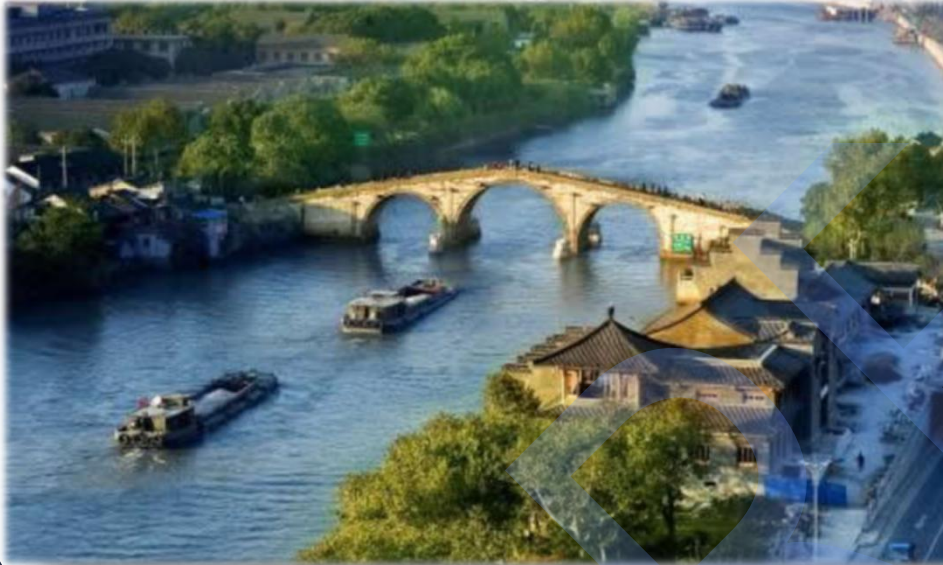
**The Great Wall**

**Can you identify these ancient engineering projects?**



**The Dujiang Dam**

# Can you identify these ancient engineering projects?



**The Grand Canal**



# Read the introductory part

“

Do you know **why** the Grand Canal was built? **What roles** has it played throughout the history of China? Read the text and find out the answers.

What information about the Grand Canal are you going to find out in the text?

# Read Para. 1

## A quiz on the Grand Canal

- 1 How long is it?
- 2 How many provinces and river systems does it cover?
- 3 Is it world famous? Why?

# Skim Para. 2-8 and do the match work

**Para. 2-3**

A Major Change

**Para. 4-5**

A Busy  
Waterway

**Para. 6-7**

The Initial  
Construction

**Para. 8**

The Canal  
Today

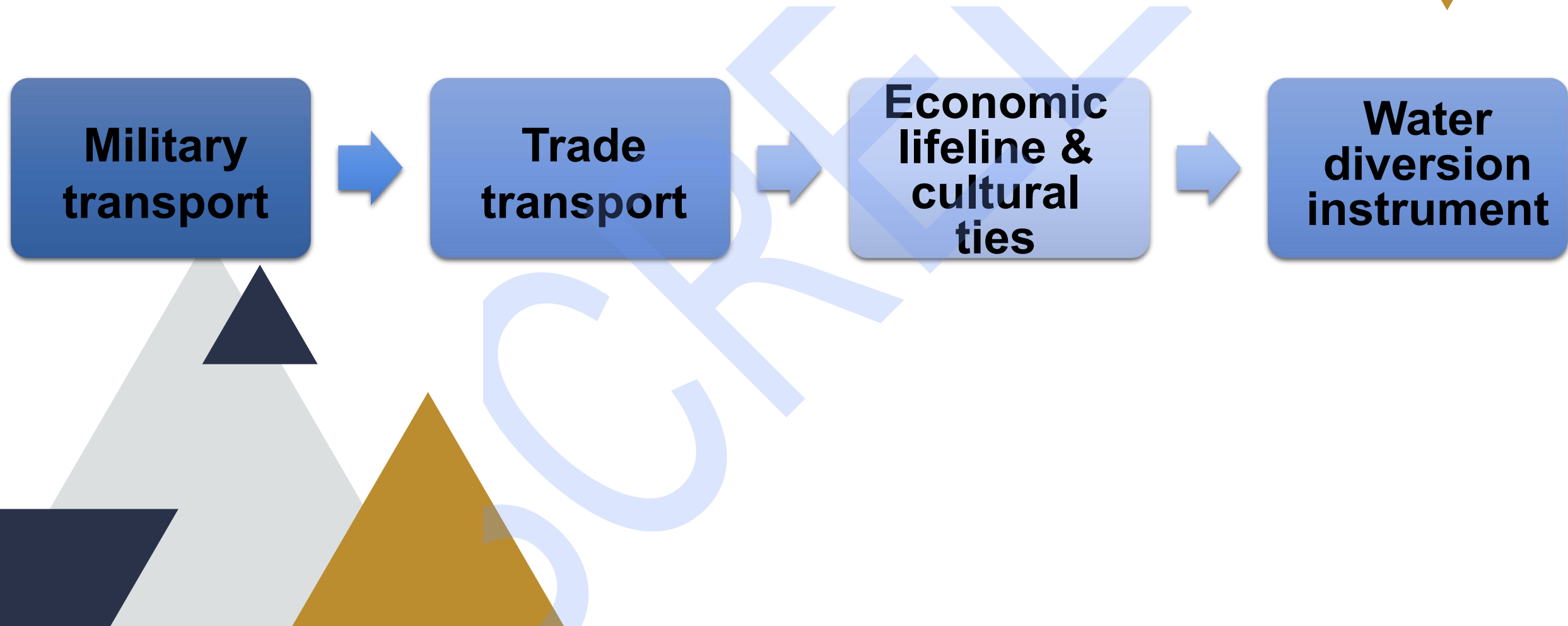
# Read Para. 2-8 carefully and match

Historical period	What happened to the canal?	What was its function?
Spring and Autumn period	construction began, linked different rivers	to transport goods and military supplies
Sui dynasty	rebuilt and connected old waterways, damaged in wars	to speed its flow
Ming dynasty	restored	to transport <b>grain</b> and <b>salt</b> from <b>south to north</b> ; <b>cotton, wool, coal, flour, precious stones and dried meat</b> from <b>north to south</b>
Today	still in use	to divert water from south to north

# Flashback to the introductory part

1. Why was the Grand Canal built?
2. What roles did it perform in history?

# The changing roles of the Grand Canal



# Simulate a tutor-student dialogue

1. Work in **pairs**.
2. One is a student. The other is his/her tutor.
3. The student is **doing a research** on the Grand Canal, asking his/her tutor a few **prepared questions**.
4. Discuss the questions in pairs.
5. The student **presents** what he/she was informed to the whole class.

(Your list of questions will be given to you randomly)

# Assignment

The slide features several decorative geometric elements. In the top right corner, there are overlapping triangles in dark blue and mustard yellow. A thin gold line extends from the top right towards the center. In the bottom left, there are more overlapping triangles in light grey, dark blue, and mustard yellow. A thin gold line also extends from the bottom left towards the center. A large, faint, light blue watermark with the word 'DRAFT' is oriented diagonally across the background.

Write a research report of 120 to 150 words based on the dialogue in class.

Thank you!